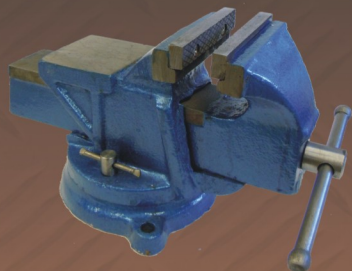


## Industrial Bench Vises



### HEAVY DUTY BENCH VISE

Item No.	Jaw Size	Throat Depth	Jaw Opening	Weight
VHD-3	3"	2-3/8"	3-1/4"	17.6 Lb.
VHD-4	4"	2-3/8"	4-1/4"	23.1 Lb.
VHD-5	5"	2-7/8"	5-1/2"	37.4 Lb.
VHD-6	6"	3-3/8"	6"	59.4 Lb.
VHD-8	8"	3-1/2"	7-3/8"	90.2 Lb.

- Durable, ductile cast iron construction
- Powerful, replaceable steel jaws for holding power
- Chrome plated, cold rolled steel worm gear screws
- Polished steel anvils
- 360° Swivel locking base with 2 lockdowns
- 3 Bolt down slots for securing to a work bench

### ALL STEEL BENCH VISE

Item No.	Jaw Size	Throat Depth	Jaw Opening	Weight
VAS-04	4"	2-3/4"	4"	15.4 Lb.
VAS-05	5"	2-3/4"	4-3/4"	24.2 Lb.
VAS-06	6"	3-1/8"	6-1/4"	29.7 Lb.
VAS-08	8"	3-1/4"	6-5/16"	33.0 Lb.
VAS-10	10"	3"	12-1/8"	37.4 Lb.

- Powerful, structural cast steel construction
- Powerful, replaceable steel jaws for holding power
- Chrome plated, cold rolled steel worm gear screws
- Black, wrinkle paint finish
- 360° Swivel locking base with 2 lockdowns
- 3 Bolt down slots for securing to a work bench



### MULTI-PURPOSE BENCH VISE

Item No.	Jaw Size	Throat Depth	Jaw Opening	Weight
VMP-3	3"	2-3/8"	1-7/8"	20.9 Lb.
VMP-4	4"	2-3/4"	4"	44.0 Lb.
VMP-5	5"	3-1/2"	5"	67.1 Lb.
VMP-6	6"	3-1/2"	5-1/4"	92.4 Lb.

- Durable, ductile cast iron construction
- Unique swivel dual purpose design
- Powerful, replaceable steel jaws for holding power
- Removable V-shaped pipe jaws to grip pipe securely
- 360° Swivel locking base with 2 lockdowns
- 3 Bolt down slots for securing to a work bench

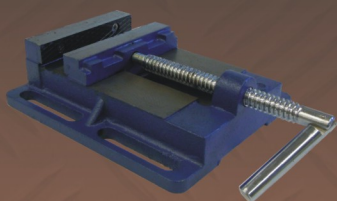
### BENCH YOKE PIPE VISE

Item No.	Pipe Capacity	Weight	Pack
VPIPEH-1	1/8" - 2"/3 - 50mm	9.4 Lb.	4
VPIPEH-2	1/8" - 2 1/2"/3 - 60mm	10.5 Lb.	4
VPIPEH-3	1/8" - 3"/3 - 75mm	16.5 Lb.	2

- Yoke and base made from durable cast iron
- Hardened alloy steel V-shaped jaws and base
- Chrome plated, cold rolled steel worm gear screw
- Sliding T-bar crank handle slides out of the way
- Hinged action for quick placement and removal of pipe
- 3 Bolt down slots for securing to a work bench
- Powder coated red finish for corrosion resistance



## Industrial Bench Vises



### DRILL PRESS VISE

Item No.	Jaw Size	Jaw Opening	Weight	Pack
VDP-4	4"	3-1/2"	5.9 Lb.	10
VDP-5	5"	4-3/4"	9.7 Lb.	6
VDP-6	6"	5-3/4"	14.5 Lb.	2

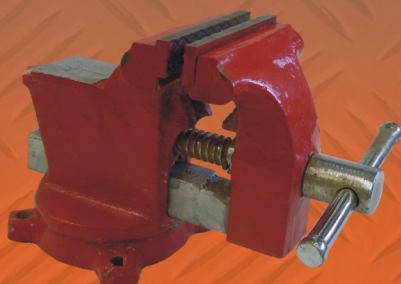
- Durable ductile cast iron construction
- Powerful, replaceable steel jaws for holding power
- Chrome plated, cold rolled steel worm gear screws
- Chrome plated crank handle folds easily out of the way
- Slotted base mounts easily on a drill press table or work bench



### PROMOTIONAL BENCH VISE

Item No.	Jaw Size	Throat Depth	Jaw Opening	Weight
VLD-4	4"	2-5/8"	2-7/8"	18.7 Lb.
VLD-5	5"	2-3/4"	3-3/4"	29.7 Lb.
VLD-6	6"	2-1/2"	5-5/8"	37.4 Lb.

- Durable, ductile cast iron construction
- Powerful, replaceable steel jaws for holding power
- Chrome plated, cold rolled steel worm gear screws
- Polished steel anvils
- 360° Swivel locking base with 2 lockdowns
- 3 Bolt down slots for securing to a work bench



### 3-1/2" HOME VISE

Item No.	Jaw Size	Jaw Opening	Weight	Pack
VHT-312	3-1/2"	3-1/2"	8 Lb.	10

- Durable, ductile cast iron construction
- Chrome plated, cold rolled steel screw
- 4 Bolt down slots for securing to a work bench
- 360° Swivel base with 1 lockdown



### ALUMINUM HOBBYIST CLAMP ON VISE

Item No.	Jaw Size	Jaw Opening	Weight	Pack
VTC-60A	2-1/4"	1-1/2"	15 Oz.	24

- Lightweight all aluminum construction
- Chrome plated, cold rolled steel screw
- Clamps on to any 1-1/2" thick surface
- Rubber pad protective pad will not mar your work bench



### CLAMP ON TABLE VISE

Item No.	Jaw Size	Jaw Opening	Weight	Pack
VTC-50	2"	2-3/8"	5.0 Lb.	10
VTC-60	2-3/8"	2-3/4"	5.5 Lb.	10

- Durable, ductile cast iron construction
- Polished, cold rolled steel screw
- 360° Swivel locking base with 1 lockdown
- Clamps on any 1-3/4" surface



### MINI CLAMP ON TABLE VISE

Item No.	Jaw Size	Jaw Opening	Weight	Pack
VTC-50I	2"	1"	2.0 Lb.	20
VTC-60I	2-1/2"	1"	2.5 Lb.	20

- Durable, ductile cast iron construction
- Polished, cold rolled steel screw
- 360° Swivel locking base with 1 lockdown
- Clamps on any 1-1/2" surface